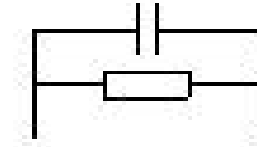
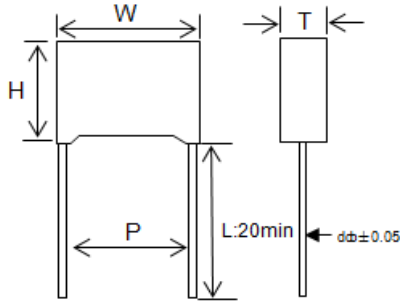


## 金属化聚丙烯膜抗干扰电容器 (带放电电阻, X2 类) Metallized polypropylene film interference suppression capacitor(class X2)

### ■ 外形图 Outline Drawing

### ■ 电路结构图 Electrical Connection



### ■ 特点

- X2 电容器与放电电阻内部并联组成
- 优异的阻燃性能
- 广泛用于电源跨线电路等抗干扰场合

### ■ Features

- Internal parallel connection from X2 cap to discharge resistor
- S Excellent active and passive flame resistant abilities
- Widely used in across-the-line, interference suppression circuit, etc.

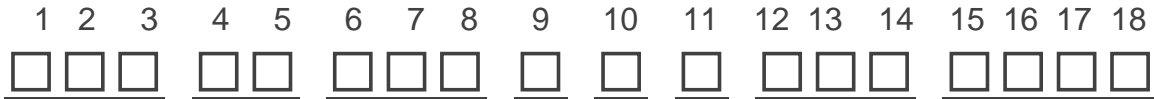
### 技术要求 Specifications

电容器类别 class	X2 类		
气候类别/阻燃等级 Climatic Category/Passive Flammability Category	40/110/56/B		
工作温度范围 Operating temperature	-40°C~110°C		
额定电压 Rated Voltage	310VAC ,50/60Hz		
最大连续直流电压 Maximum continuous DC voltage	630Vdc		
电容量范围 Capacitance Range	0.22 ~ 10.0μF		
电容量偏差 Capacitance Tolerance	±10% (K), ±20% (M)		
耐电压 Voltage Proof	引线之间 Between Terminals:	4.3U <sub>R</sub> (DC) (5S)	
	极壳之间 Between Terminals To Case:	2 120Vac (1min)	
损耗角正切 Dissipation Factor	0.22μF ≤ C <sub>R</sub> ≤ 0.47μF	0.47μF < C <sub>R</sub> ≤ 1.0μF	1.0μF < C <sub>R</sub> ≤ 10μF
	≤25×10 <sup>-4</sup> (1kHz,20°C)	≤20×10 <sup>-4</sup> (1kHz,20°C)	≤30×10 <sup>-4</sup> (1kHz,20°C)
	≤20×10 <sup>-4</sup> (10kHz,20°C)	≤40×10 <sup>-4</sup> (10kHz,20°C)	-----
放电电阻范围/偏差 Resistance range/Tolerance	470 kΩ ~ 20 MΩ , ±10%		

## 产品代码说明 Part number system

### ■ 18 位产品代码说明如下:

The 18 digits part number is formed as follow:



### W 6 3

第 1~3 位: 型号代码

W63=MKPR

第 4~5 位: 交流额定电压

Q3=310V

第 6~8 位: 标称容量

举例 : 104 =  $10 \times 10^4$  PF = 0.1 $\mu$ f

第 9 位: 容量偏差

K=±10%, M=±20%

第 10 位: 引线脚距

P=22mm S=27mm X=37mm

第 11 位: 放电电阻阻值代码

第 12 位: 引线加工和包装代码

L= 直脚 K= 引线成型

T= 弹带包装

第 13~18 位: 内部特征码

Digit 1 to 3: Series code

W63=MKPR

Digit 4 to 5: AC rated voltage

Q3=310V

Digit 6 to 8: Rated capacitance

For example: 104 =  $10 \times 10^4$  PF = 0.1 $\mu$ f

Digit 9: Capacitance tolerance

K=±10%, M=±20%

Digit 10: Pitch

P=22mm S=27mm X=37mm

Digit 11: Value code of the discharge resistor

Digit 12: Lead form and packaging code

L= straight lead K= Lead kinked

T= ammo-pack

Digit 13 to 18: Internal use

## ■ 外形尺寸 Dimensions (mm)

310Vac						
Cn ( $\mu$ F)	W max	H max	T max	P	d	Part number
0.22	26.5	16.0	7.0	22.0	0.8	W63Q3224-P#*****
0.33	26.5	17.0	8.5	22.0	0.8	W63Q3334-P#*****
0.47	26.5	18.5	10.0	22.0	0.8	W63Q3474-P#*****
0.68	26.5	20.0	11.0	22.0	0.8	W63Q3684-P#*****
1.0	26.5	22.0	12.0	22.0	0.8	W63Q3105-P#*****
0.47	32.0	18.0	9.0	27.0	0.8	W63Q3474-S#*****
0.68	32.0	20.0	11.0	27.0	0.8	W63Q3684-S#*****
1.0	32.0	22.0	13.0	27.0	0.8	W63Q3105-S#*****
1.5	32.0	22.0	13.0	27.0	0.8	W63Q3155-S#*****
2.2	32.0	28.0	14.0	27.0	0.8	W63Q3225-S#*****
3.3	32.0	33.0	18.0	27.0	0.8	W63Q3335-S#*****
4.7	32.0	37.0	22.0	27.0	0.8	W63Q3475-S#*****
1.5	41.0	22.0	11.0	37.0	1.0	W63Q3155-X#*****
2.2	41.0	24.0	13.0	37.0	1.0	W63Q3225-X#*****
3.3	42.0	28.0	14.0	37.0	1.0	W63Q3335-X#*****
4.7	41.0	32.0	17.0	37.0	1.0	W63Q3475-X#*****
6.8	41.0	37.0	22.0	37.0	1.0	W63Q3685-X#*****
10.0	41.0	41.0	26.0	37.0	1.0	W63Q3106-X#*****

备注: 1. "-" 表示容量偏差。"- " = capacitance tolerance code, M=±20%,K=±10%

2. 第 12 位表示引线加工和包装代码, L= 直脚 straight lead K= 引线成型 Lead kinked T= 弹带包装 ammo-pack

3. 第 11 位 "# " 表示放电电阻阻值代码。Digit 11: "# " = Value code of the discharge resistor

## 阻值代码:

电阻值 R	470K $\Omega$	680K $\Omega$	820K $\Omega$	1MK $\Omega$	1.2MK $\Omega$	1.5MK $\Omega$	2.2MK $\Omega$	3.3MK $\Omega$	4.7MK $\Omega$	6.8MK $\Omega$	10MK $\Omega$	20MK $\Omega$
代码 code	A	B	C	D	E	F	H	L	N	P	S	T